



**T.J. HOMECRAFTS STAINED GLASS**

**TO ORDER CALL OR FAX: (250) 546-3866**

*SECTION D*  
*Supplies*

<b>Contents</b>	<b>Page</b>	<b>Contents</b>	<b>Page</b>
Agate Slices .....	D1	Mirror Edge Sealant .....	D2
Art Clay Silver .....	D1	Mosaic Art Colorant .....	D7
Bails.....	D8	Mosaic Supplies .....	D7
Belt Buckle Blanks .....	D7	Night Lights.....	D3
Castaway Molds.....	D1	Oil Lamps .....	D3
Chains .....	D8	Patina .....	D2
Cleaners.....	D1	Patina Buddy .....	D7
Clock Parts.....	D2	Pre-cut Glass for Mosaics ..	D5, D6
Clock Molds.....	D4	Pens & Drawing Supplies...	D7
Coaster Molds.....	D4	Putty.....	D2
Cord, Cord Clasps & Sliders...	D8	Silver Wire .....	D8
Crimp Beads .....	D7	Spiders.....	D3
Easel Backs .....	D2	Stepping Stone Molds .....	D4, D5
Earring Parts .....	D8	Stop Blocks.....	D7
Etching Supplies .....	D2	Tape.....	D7
Fan Lamps .....	D4	Vase Caps .....	D3
Finishing Compounds .....	D1	Weathervane Hardware .....	D7
Flash Papers.....	D2	Whiting.....	D2
Flux.....	D1		
Fuse Printed Wings.....	D2	Prices - See Price List Section D	
Glass Cutter Oil.....	D1		
Glues and Adhesives .....	D2		
Grinder Coolant.....	D2		
Headpins .....	D7		
Jewelry Supplies .....	D7, D8		
Kaleidoscope Kits .....	D4		
Lamp Bases .....	D3		
Lamp Accessories & Supplies	D4		
Leading Supplies .....	D7		
Mark Preserver.....	D2		



**T.J. HOMECRAFTS STAINED GLASS**

**TO ORDER CALL OR FAX: (250) 546-3866**

*Supplies*

**AGATE SLICES**

Beautifully highly polished thin agate slices. Incorporate into panels, frames and boxes for a unique effect. Slabs are thin enough to accommodate regular sized foils. Available in blue, green, pink, purple and natural.

<u>Stock #</u>	<u>Description</u>
568	Large approximately 4" to 6" in diameter
567	Medium approximately 3" to 4" in diameter
691	Small approximately 2" in diameter

**ART CLAY SILVER**

A pliable aqueous clay that transforms to 99.9% silver when fired at a high temperature. It is made of fine silver particles, water and organic binders. Easily make free form pieces with fine detail that would be difficult using traditional methods. Art Clay Silver is easy to fire using a kiln or a micro butane torch.

<u>Stock #</u>	<u>Description</u>
1522	Art Clay Silver 650 - 10 g package
1523	Art Clay Silver 650 Slow Dry - 20 g package
1524	Art Clay Silver 650 Paste
1525	Art Clay Silver 650 - Syringe with tip
1526	Art Clay Silver Oil Paste
1580	Art Clay Silver Cork Clay
1528	Hi Density Neoprene Block
1527	Needle File Kit
1181	Grifhold Hobby Knife #7
1182	Grifhold Hobby Knife Replacement Blades 5 pk.
1575	3 way Buffer
1647	Steel Brush
1530	Fire Brick - 2" x 4" x 6"
1529	Dual Purpose Modeling Tool for Clay
1654	Art Clay Silver Kit - Contains 10 g Art Clay Silver 650, Art Clay Silver 650 Paste, Micro Torch, Steel Brush, Taklon Brush, Hobby Knife, Roller, 3 way Buffer, Neoprene Block, Needle File Kit, Fire Brick, Modeling Tool, Matte Board Strips, 650 grit sandpaper, Art Clay Book.

**CASTAWAY MOLDS**

<u>Stock #</u>	<u>Description</u>
1288	Butterfly Body Mold - use your soldering iron to melt leftover lead scraps or solder into the mold to make either 1" 1/2" or 2" butterfly bodies.

**CASTAWAY MOLDS *continued***

<u>Stock #</u>	<u>Description</u>
1289	Dragonfly Body Mold - use your soldering iron to melt leftover lead scraps or solder into the mold to make either 2" or 3" dragonfly bodies.



#1289



#1288

**CHEMICALS**

<u>Stock #</u>	<u>Description</u>
----------------	--------------------

**Cleaners**

1403	Kwik Clean 16 oz.
1301	Shepherd Hand soap 16 oz.
1302	Shepherd Hand soap D-Wipes

**Flux**

2699	Canfield Solder Magic Action Tin 8 oz. - Brush on metal and heat with soldering iron for quick tinning of filigrees, lamp caps, copper foil sheet and overlays.
2698	Canfield Solder Magic Gel 8 oz. - Zinc-free, non hazardous and environmentally safe.
1788	Classic 100 Gel Flux 4 oz.
199	Glaxtar Glasflux 1 gal
495	Glaxtar Glasflux 4 oz.
1304	Novacan Old Masters 3.78 liters
1096	Novacan Old Masters 237 ml.

**Finishing Compounds**

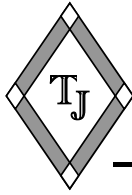
458	Clarity Finishing Compound 354 ml. - Polishes and protects soldered seams. Cleans and waxes glass.
-----	--

**Glass Cutter Oil**

1034	GAI Water Soluble Cutter Oil 4 oz.
480	Novacan Oil Base Cutter Oil 8 oz.

**Grinder Coolant**

279	Novacan Grinder Coolant 237 ml.
1340	Glaxtar E Z Grind Grinder Coolant 8 oz.



**T.J. HOMECRAFTS STAINED GLASS**

**TO ORDER CALL OR FAX: (250) 546-3866**

*Supplies*

**CHEMICALS continued**

Stock #    Description

**Mirror Edge Sealant**

180            Sprayway Mirror Edge Sealant

**Patina**

497            Novacan Black Patina 3.78 liters  
 14              Novacan Black Patina 8 oz.  
 684            Novacan Black Patina for Zinc 237 ml.  
 499            Novacan Copper Patina 3.78 liters  
 127            Novacan Copper Patina 8 oz.  
 1160           Patina Buddy



#1160

**Putty & Whiting**

126            Dap 33 glazing compound 1/2 pint  
 192            Inland Cement 1 lb. tub  
 297            Inland Cement 4 lb. quart can  
 195            Whiting 1 lb.  
 358            Whiting 5 lb.

**FLASH PAPERS**

Stock #    Description

2646          Flash Papers 10 pack - great for preparing metals for soldering and preparing zinc came for patina.

**MARK STAY II**

A heavy duty mark preserver for use with saws and grinders that use a tremendous amount of water.

Stock #    Description

3000           Mark Stay II 1 oz.

**ETCHING SUPPLIES**

Stock #    Description

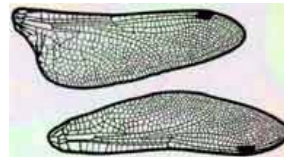
803            Armour Etch Etching Cream 24 oz.  
 535            Armour Etch Etching Cream 3 oz.  
 2928          Armour Etch All Dip 'N' Etch 16 oz.  
 1485          Armour Etch All Dip 'N' Etch 4 oz.  
 1086          Edco Sandblast Resist 12" x 18 yds. white 12 mil.  
 181            ConTac clear 18" x 25 yards  
 414            ConTac clear per foot  
 797            Rub 'N' Etch Stencils - assorted patterns  
 1520          Masque Pen - allows the artist to make continuous lines of liquid mask.

**FUSE PRINTED WINGS**

These intricately detailed wings are supplied on a sheet of clear glass ready to be cut to the finished shape with one complete set of wings per sheet. They are as easy to cut as most art glass.

Stock #    Description

1125           Monarch Butterfly Wings Fuse Printed Glass 3"  
 1126           Monarch Butterfly Wings Fuse Printed Glass 4"  
 1128           Dragonfly Wings Fuse Printed Glass 5"  
 1129           Dragonfly Wings Fuse Printed Glass 7"



**GLUES AND ADHESIVES**

Stock #    Description

211            Glass Pro Mosaic Laminating Glue 4 oz.  
 1346          Bullseye Glustac 4 oz.  
 1521          Hotline Pate-de-verre & Fusers Glue 4 oz.  
 1461          E6000 Multi Purpose Adhesive  
 2957          Devcon '2 Ton' Epoxy 25 ml.  
 1319          KOA 325 Ultraviolet Adhesive 4 oz.

**CLOCK PARTS**

Stock #    Description

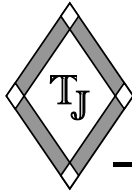
379            8" Brass Clock Face  
 433            Inland Precision Quartz Mini Clock Movement with hour , minute and sweep second hands

**EASLE BACKS**

Stock #    Description

1260           Easel Back 4" x 6"  
 1228           Easel Back 5" x 7"  
 1261           Easel Back 8" x 10"





**T.J. HOMECRAFTS STAINED GLASS**

**TO ORDER CALL OR FAX: (250) 546-3866**

*Supplies*

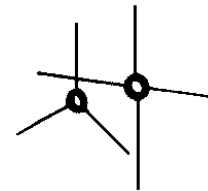
**LAMP BASES**

<u>Stock #</u>	<u>Description</u>
1789	7 1/4" Classic
616	7 1/2" Pompeii
311	7 1/2" Tree
1685	7 3/4" Nouveau
310	7 3/4" Lily
1574	9" Pompeii
312	9 1/2" Lilly Pad
1790	9 1/2" Mission
1791	10 1/4" Classic
314	10 1/2" Lily Pad
1123	10 1/2" Tree
1792	11" Parisian
313	12 1/2" Pompeii
1793	13 1/2" Mission
317	14.5" Nouveau
1794	14" Tree
318	15" Oak Tree
880	Aanraku Style Wooden Triangle



**SPIDERS**

<u>Stock #</u>	<u>Description</u>
101	3 way long
116	3 way short
94	4 way long
102	4 way short



**VASE CAPS**

<u>Stock #</u>	<u>Description</u>
<b>Round Vented</b>	
776	Brass 1 1/2"
382	Brass 2"
593	Brass 2 1/2"
62	Brass 3"
594	Brass 3 1/2"
196	Brass 4"
595	Brass 4 1/2"
197	Brass 5"
596	Brass 5 1/2"
361	Brass 6"



**Miscellaneous Vase Caps**

1080	Brass 6 sided vented - each side measures 1 11/16"
1079	Brass 8 sided vented - each side measures 1 1/4"
1078	Brass 10 sided vented - each side measures 1"
367	Brass 2 3/4" square vented

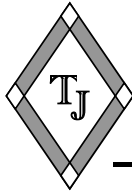


**NIGHT LIGHTS**

<u>Stock #</u>	<u>Description</u>
177	Night Light Base with clip - White or Ivory
185	Night Light Clips

**OIL LAMPS**

<u>Stock #</u>	<u>Description</u>
766	Mini Oil Lamp - fits most votive candle holders



**T.J. HOMECRAFTS STAINED GLASS**  
**TO ORDER CALL OR FAX: (250) 546-3866**

*Supplies*

**LAMP PARTS**

<u>Stock #</u>	<u>Description</u>
1675	Small Pyramid Finial
1676	Large Pyramid Finial
65	6" Harp
1674	6 1/2" Harp
66	7" Harp
79	8" Harp
839	Lamp Shade Riser 1/2"
840	Lamp Shade Riser 3/4"
841	Lamp Shade Riser 1"
842	Lamp Shade Riser 1 1/2"
1677	Shoulder Reducer

**FAN LAMPS**

<u>Stock #</u>	<u>Description</u>
60	Scalloped Antique Brass Base with Cord
2816	Hexagon Antique Brass Base with Cord
179	Fan Lamp Cord Set - 6' brown cord with switch , plug, spring clip, candelabra socket



#2816



#60

**WORDEN LAMP FORMS & PATTERNS**

All Worden lamp forms and patterns are available by special order. Call for pricing.

**KALEIDOSCOPE KITS**

<u>Stock #</u>	<u>Description</u>
1023	Clarity Kaleidoscope Kit - includes patterns for a 10" tapered viewing tube and two 6" hexagonal colour wheels, brass axel assembly, legs and complete instructions.
1024	Clarity Mini-Scope Kit - includes three pre-cut pieces of front surface mirror, 12 full sized patterns for colour wheels and full sized patterns for a 8" viewing tube, brass axel assembly, and complete instructions.

**MOSAIC COASTER MOLDS**

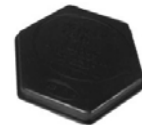
<u>Stock #</u>	<u>Description</u>
326	Coaster Mold - 4 1/4" square
327	Coaster Mold - 4 1/4" hexagon
328	Coaster Mold - 4 1/4" round
1662	Mosaic Coaster Kit - Contains 4 Mosaic Art coaster molds, FlashCrete to make four coasters, ConTac, pattern pack and instructions.



#326



#328



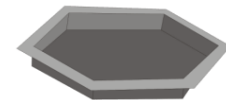
#327

**MOSAIC ART CLOCK MOLD**

<u>Stock #</u>	<u>Description</u>
378	Clock Mold with works
1660	Mosaic Art Clock Kit - Contains reusable Mosaic Art clock mold, clock works, 2 lb. tub of Mosaic Stone Cement, ConTac, pattern pack and instructions.

**MOSAIC STEPPING STONE MOLDS**

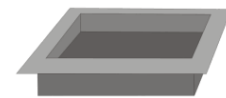
<u>Stock #</u>	<u>Description</u>
342	12" Hexagon
344	12" Round
343	12" Square
625	14" Heart
214	14" Round
212	16" Hexagon
349	8" x 16" Rectangle
571	16" Square
416	18" Moonstone
415	18" Round
351	7" x 20" Address Stone
213	4" x 8" Brick
411	8" Round
97	8" x 8" Square
1399	Bench Top
530	Butterfly
1180	House
1267	Scalloped Edger 6" x 19"
350	Garden Border



Hexagon



Round



Square



**T.J. HOMECRAFTS STAINED GLASS**  
**TO ORDER CALL OR FAX: (250) 546-3866**

*Supplies*

**MOSAIC STEPPING STONE MOLDS *continued***



Heart



Moonstone



Rectangle



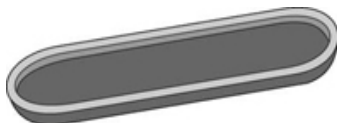
House



Brick



Garden Border



Bench Top



Address Stone



Scalloped Edger



Butterfly

**PRE-CUT MOSAIC CLUSTERS**

Save time cutting and grinding by using these colorful stained glass clusters.

Stock #      Description

339      Large Glass Packs approximately 6" x 7"



Hummingbird



Blue Morning Glory



Gecko



Yellow Sunburst



Tropical Fish

340      Small Glass Packs approximately 4" x 4"



Bumble Bee



Red Apples



Palm Tree



Red Hibiscus

**PRE-CUT GLASS SHAPES**

Stock #      Description

- 653      Number 0 - Black 3 1/2" high
- 644      Number 1 - Black 3 1/2" high
- 646      Number 2 - Black 3 1/2" high
- 647      Number 3 - Black 3 1/2" high
- 648      Number 4 - Black 3 1/2" high
- 649      Number 5 - Black 3 1/2" high
- 650      Number 6 - Black 3 1/2" high
- 645      Number 7 - Black 3 1/2" high
- 651      Number 8 - Black 3 1/2" high
- 652      Number 9 - Black 3 1/2" high

**01234  
56978**



**T.J. HOMECRAFTS STAINED GLASS**  
**TO ORDER CALL OR FAX: (250) 546-3866**

*Supplies*

**PRE-CUT GLASS SHAPES *continued***

Pre-cut glass shapes are great for mosaics or any stained glass project.

Stock #	Description
120	Stained Glass Chips 3/4" x 3/4" available in any Spectrum Glass colour - 25 per bag
341	Stained Glass Chips 3/4" x 3/4" available in any Spectrum Glass colour - 50 per bag
641	Deco Link 1 1/4" x 3 1/4" Black
642	Red Heart 1 3/8" x 1 3/8"
1534	Green Holly 2 1/2" x 1 1/4"
1730	Green Ivy Leaves 1 1/4" x 1 1/4" 6 per pack
1729	Dragonfly Wings - 4 wings 2 3/4" x 2" (each side)



#641



#642



#1730



#1729



#1534

1723	Green Frog on Lily Pad 5" x 6"
1724	Lily Pad with Pink Flower 4" x 3 1/4"
1725	Grape Leaves 6 1/2" x 4"
1726	Hummingbird Cluster - Green 7 3/4" x 6 1/2"
3169	Hummingbird Cluster - Mauve 7 3/4" x 6 1/2"
3173	Green Hummingbird 4 1/2" x 4"
3174	Green Hummingbird with Red Flower 5 1/2" x 5"



#1723



#1724



#1725



#1726



#3169



#3173

**PRE-CUT GLASS SHAPES *continued***

Stock #	Description
1721	Yellow Iris 4 1/4" x 6 1/4"
1722	Purple Iris 4 1/4" x 6 1/4"
1727	Orange, White & Black Koi 4 1/2" x 8 1/2"
1728	Lighthouse 7 3/4" x 9 3/4"



#1721



#1727



#1728

1720	Pink Rose 5 1/4" x 3 1/2"
3171	Red Rose 5 1/4" x 3 1/2"
3172	Yellow Rose 5 1/4" x 3 1/2"
3170	Sailboat 6 3/4" x 5 3/4"



#1720



#3170

3175	Shamrock 2 1/2" x 2 1/4"
3176	Blue Small Flower
3177	Pink Small Flower
3178	Purple Small Flower
3179	Orange Small Flower
3180	Yellow Small Flower



#3180



#3175

**PRE-CUT GLASS SHAPES FOR GLASS FUSING  
 or MOSAICS See Section G**





**T.J. HOMECRAFTS STAINED GLASS**  
**TO ORDER CALL OR FAX: (250) 546-3866**

*Supplies*

**MOSAIC ART COLORANTS**

These highly concentrated pigments are great for coloring Mosaic Art tiles, coasters and stepping stones. The 3 oz. package colours about 36 coasters or approximately 5 pounds of Cement Topping Mix.

<u>Stock #</u>	<u>Description</u>
332	Mosaic Art Colorant 3 oz. - Sandstone, Yellow, Rose Brick Red, Plum, Terra Cotta, Brown or Charcoal
333	Mosaic Art Colorant 3 oz. blue
334	Mosaic Art Colorant 3 oz. green

**MOSAIC SUPPLIES**

<u>Stock #</u>	<u>Description</u>
181	Clear ConTac 18" x 25 yards
414	Clear ConTac per foot
211	Glass Pro Mosaic Laminating Glue 4 oz.
1466	Liquifusion Kit - contains 1 8 oz. Resin, 1 8 oz. Hardener & instructions
1467	Liquifusion Bubble Buster 8 oz.
298	Leponitt Mosaic Glass Cutter
345	FlashCrete 20 lb. box
331	Mosaic Stone Cement 2 lb. tub

**PATINA BUDDY**

Using the Patina Buddy gives you great looking patina. Lightly scrub your project with the Patina Buddy using a neutralizing cleaner and water. Dry project, apply patina, then clean and dry project.

<u>Stock #</u>	<u>Description</u>
1160	Patina Buddy



**PENS & DRAWING SUPPLIES**

<u>Stock #</u>	<u>Description</u>
1108	Copper Paint Marker
46	Sharpie Fine Point Black Pen
47	Snowman Gold Paint Marker
1479	18" Aluminum Ruler
67	Adhesive Backed Cork Strip - stops rulers and squares from slipping.
746	Yardstick Compass - turns any ruler into a compass to draw circles any size.

**TAPE**

<u>Stock #</u>	<u>Description</u>
1041	Double Sided Crepe Tape 1/2" X 36" yards

**LEADING SUPPLIES**

<u>Stock #</u>	<u>Description</u>
183	Horseshoe Nails - Singles
1014	Horseshoe Nails - Box of 100
1158	Lead & Glass Stop Blocks package of 25
2646	Flash Papers - Lets you patina or solder stubborn metals with ease. Pack of 10.

**WEATHERVANE HARDWARE**

<u>Stock #</u>	<u>Description</u>
1306	Brass Weathervane Hardware Kit - letters not included
1143	Copper Weathervane Hardware Kit - letters not included
1144	Brass Weathervane Letters N, S, E & W

**BELT BUCKLE BLANKS**

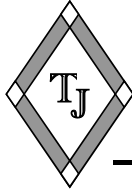
For fused or stained glass. See the books, *Stained Glass Belt Buckles* and *Fused Glass Belt Buckles*.

<u>Stock #</u>	<u>Description</u>
1432	Aanraku Belt Buckle Blank - 2.5" x 3" Oval
1431	Aanraku Belt Buckle Blank - 2.5" Round

**JEWELRY SUPPLIES**

<u>Stock #</u>	<u>Description</u>
1482	Silver Plated Crimp Beads
1383	Nickel Lobster Clasps - 15 mm
2921	Gold Filled Headpins 4" - each
2919	Sterling Silver Headpins 3" - each
2920	Sterling Silver Headpins 4" - each
2907	Sterling Silver Round Jump Rings 4 mm 22G





**JEWELRY SUPPLIES continued**

**Aanraku Jewelry Bails**

<u>Stock #</u>	<u>Description</u>
2960	Earring Bail Gold Plated each
2961	Earring Bail Gold Plated pack of 24
2825	Earring Bail Silver Plated each
2826	Earring Bail Silver Plated pack of 24
2823	Small Jewelry Bail Gold Plated each
2824	Small Jewelry Bail Gold Plated pack of 25
1348	Small Jewelry Bail Nickel each
1592	Small Jewelry Bail Nickel pack of 25
1579	Small Jewelry Bail Silver Plated each
1593	Small Jewelry Bail Silver Plated pack of 25
2657	Large Jewelry Bail Silver Plated each
1924	Small Jewelry Bail Sterling Silver each



Jewelry Bail



Earring Bails

**Prong Bail with Loop**

<u>Stock #</u>	<u>Description</u>
----------------	--------------------

Use with the Swarovski crystals in catalogue Section A.

2890	Silver Plated
2891	Gold Plated
698	Nickel



**Chains**

<u>Stock #</u>	<u>Description</u>
2985	Gold Filled Seamed Snake Chain 1 mm x 18"
2984	Sterling Silver Snake Chain 1.3 mm x 16"
2908	Sterling Silver Snake Chain 1.3 mm x 18"

**Wire**

<u>Stock #</u>	<u>Description</u>
1553	Sterling Silver 20 gauge Hard - per inch
1552	Sterling Silver 22 gauge Hard - per inch
1561	Sterling Silver 24 gauge Hard - per inch
2895	Sterling Silver 26 gauge Hard - per inch
2987	Silver 30 gauge .999 fine silver - per foot

**Earring Parts**

<u>Stock #</u>	<u>Description</u>
2911	Gold Filled Ear Nut Medium .33
2912	Gold Filled Ear Nut Heavy .36
2913	Sterling Silver Ear Nut Medium .38
2914	Small Rubber Ear Nut - Clear
2918	Gold Filled 4 mm Ball Post with Ring .030
2917	Sterling Silver 4 mm Ball Post with Ring .030
2916	Gold Filled 5 mm Flat Pad Post .030
2915	Sterling Silver 5 mm Flat Pad Post .032
2910	Gold Filled Loop with Bead Ear Wires
2909	Sterling Silver Loop with Bead Ear Wires
1563	Ear Wires - Sterling Silver French Style Flattened



#2911, #2912  
& #2913



#2918 & #2917



#2916 & #2915



#2910 & #2909



#1563

**Cord, Cord Clasps & Sliders**

<u>Stock #</u>	<u>Description</u>
2926	Gold Plated Spiral Cord Clasp for 2 mm cord
2925	Silver Plated Spiral Cord Clasp for 2 mm cord
2893	Gold Plated Cord Slider for 1 mm cord
2892	Silver Plated Cord Slider for 1 mm cord
2923	Gold Plated Cord Slider for 2 mm cord
2924	Silver Plated Cord Slider for 2 mm cord
2889	Black Waxed Cotton Cord 1.4 mm - per yard



#2925  
#2926



# 2892, 2893,  
#2923, #2924